

# OPV-FT600

## *OptiView™ FiberInspector™ Video Probe Installation Guide*

The OPV-FT600 OptiView FiberInspector Pro Video Probe connects to an OptiView Integrated Network Analyzer to let you inspect the ends of fiber optic connectors. The probe's 250X and 400X magnifications reveal dirt, scratches, and other defects that can cause poor performance or failures in fiber optic networks.

The video probe comes with the following:

- FT650 fiber probe with NTSC to USB conversion box
- Probe adapter tips (ST, SC, FC, and universal 2.5 mm patch cord tip)
- Installation guide

If anything is missing or damaged, contact the place of purchase immediately.

### ***Safety Information***



**To avoid possible eye damage caused by hazardous radiation, never look directly into optical output connectors. Some sources produce invisible radiation that can permanently damage your eyes.**

**To avoid possible fire, electric shock, or personal injury, do not open the case; no user-serviceable parts are inside.**

## Connecting the Probe and Attaching an Adapter Tip

### Caution


Some adapter tips have small screws that slide into a slot on the probe end. Do not adjust this screw.

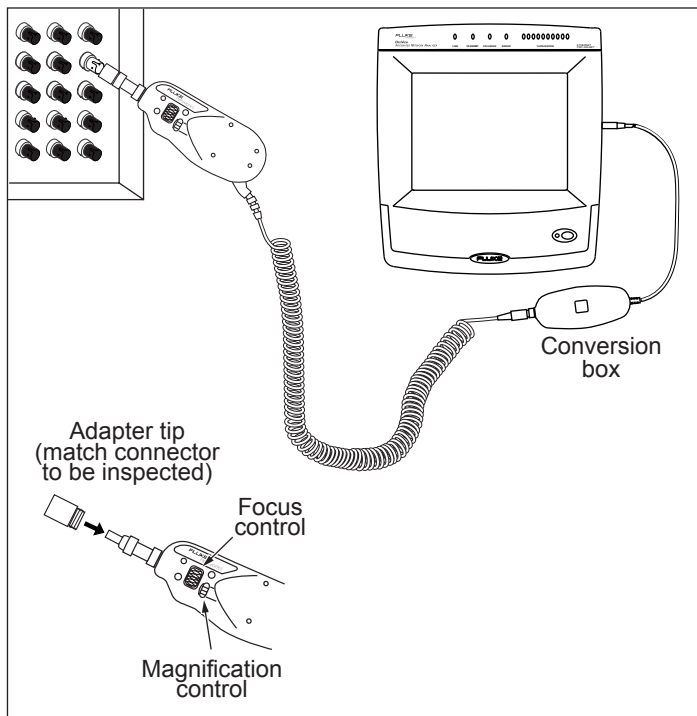
- 1 Connect the cable from the fiber probe's conversion box to one of the OptiView analyzer's USB ports (Figure 1). If this is the first time using FiberInspector, the "Found New Hardware" dialog may appear. The operating system then loads the FiberInspector driver for you.
- 2 Connect the fiber probe to the conversion box.
- 3 Screw an adapter tip that matches the cable type being inspected onto the fiber probe.

## Using the FiberInspector Software on the OptiView Analyzer

### Note

*For the OptiView Series 2 analyzer, see the next section.*


- 1 Start the FiberInspector software by double-clicking on the OptiView FiberInspector icon .
- 2 From the FiberInspector startup window, you can:
  - Click **View FiberInspector Help** for details on using the probe. The help includes pictures of defective fiber ends for reference.
  - Click **Launch FiberInspector Imaging** to start the imaging software.
- 3 To turn on the probe, select **Scan New...** from the **File** menu in the imaging software.
- 4 Place the probe on a fiber connector.
- 5 Turn the larger ring on the probe to focus the image (Figure 1). Turn the smaller ring to change magnification.
- 6 To capture the image, press the button on the conversion box or click **Capture Still Image**. For details on using the imaging software, refer to the software's online help.



ajv01f.eps

**Figure 1. Connecting the Probe and Attaching an Adapter Tip**

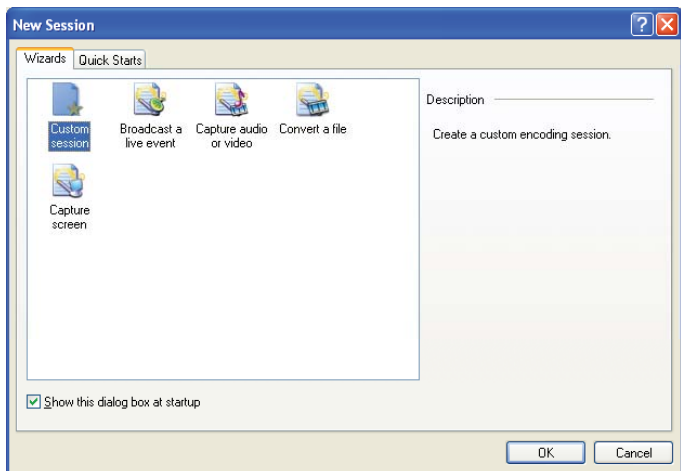
## **Using the FiberInspector Software on the OptiView Series II Analyzer**

- 1 Start the FiberInspector software by double-clicking on the OptiView FiberInspector icon , and then pressing the **Launch FiberInspector Imaging** button. This launches the Windows® Media Encoder software.

### *Note*

*Press **View FiberInspector Help** for details on using the probe. The help includes pictures of defective fiber ends for reference and fiber cleaning instructions. Within the Windows Media Encoder software, select **Help** from the menu bar on using the software.*

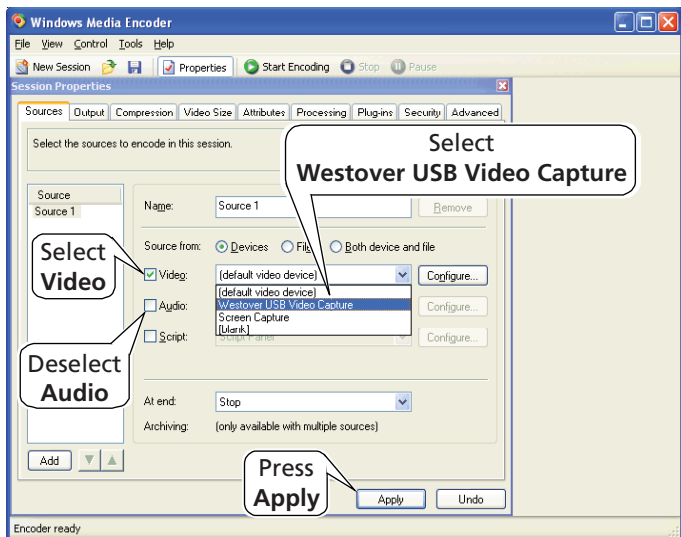
- 2 Select **Custom Session** (Figure 2).



ajv03f.wmf

**Figure 2. Selecting "Custom Session"**

- 3 On the Source tab (Figure 3) select **Video** and deselect **Audio**.
- 4 Select **Westover USB Video Capture** from the Video drop-down list, then press **Apply**.



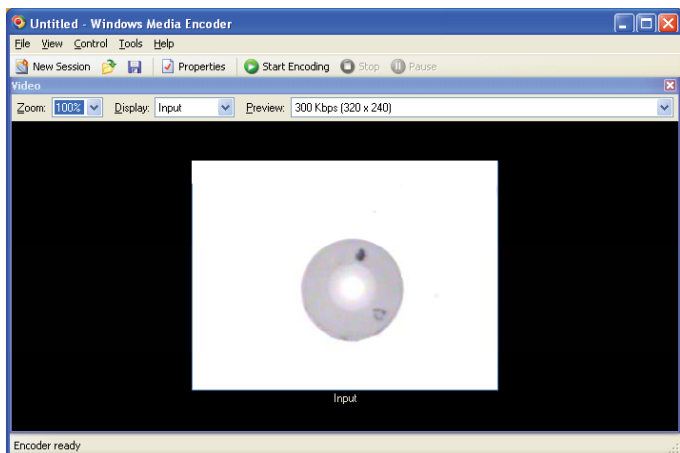
ajv02f.wmf

**Figure 3. Selecting the Video Function**

- 5 The Windows Media Encoder dialog displays. Press **OK** to continue.

-continued-

- 6 Place the probe on a fiber connector.
- 7 Turn the larger ring on the probe to focus the image (Figure 1). Turn the smaller ring to change magnification. Figure 4 shows an example of a fiber endface image.
- 8 Select **File | Save As...** to save the image.



ajv05f.wmf

**Figure 4. Fiber Endface Example**

## ***Registration***

Registering your product with Fluke Networks gives you access to valuable information on product updates, troubleshooting tips, and other support services. To register, fill out and return the postage-paid card provided, or fill out the online registration form on the Fluke Networks website at [www.flukenetworks.com/registration](http://www.flukenetworks.com/registration).

## Contacting Fluke Networks



[www.flukenetworks.com](http://www.flukenetworks.com)



[support@flukenetworks.com](mailto:support@flukenetworks.com)



+1-425-446-4519

- Australia: 61 (2) 8850-3333 or 61 (3) 9329 0244
- Beijing: 86 (10) 6512-3435
- Brazil: 11 3044 1277
- Canada: 1-800-363-5853
- Europe: +44 1923 281 300
- Hong Kong: 852 2721-3228
- Japan: +81-3-3434-0181
- Korea: 82 2 539-6311
- Singapore: +65-6738-5655
- Taiwan: (886) 2-227-83199
- USA: 1-800-283-5853

Visit our website for a complete list of phone numbers.

## Maintenance

Clean the case with a soft cloth dampened with water or a mild detergent. Do not use solvents or abrasive cleansers.

## Getting Service

Contact Fluke Networks for information on authorized Fluke Networks service centers.


## Accessories and Replacement Parts

The following accessories and replacement parts are available from Fluke Networks for the OPV-FT600 FiberInspector probe.

Visit the Fluke Networks website at [www.flukenetworks.com](http://www.flukenetworks.com) for a complete list of fiber test equipment and accessories.

Description	Fluke Model
Fiber Optic Cleaning Kit	NF430
MT-RJ adapter tip	NF360
LC adapter tip	NF362
MU adapter tip	NF364

## Specifications

<b>Magnification</b>	250X and 400X
<b>Camera type</b>	0.33 in (8.38 mm) CCD with adjustable focus
<b>Light source</b>	LED
<b>Interface</b>	NTSC to USB conversion box
<b>Power source</b>	Powered by the OptiView analyzer via the conversion box
<b>Lighting technique</b>	Coaxial
<b>Dimensions</b>	Probe: 1.8 in x 1.7 in x 5.5 in (45.7 mm x 43.2 mm x 140 mm) (length depends on adapter tip)  Conversion box: 6 in x 2.3 in x 0.7 in (15 cm x 5.8 cm x 1.8 cm)
<b>Weight</b>	Probe: 0.4 lb (180 g) Conversion box: 0.17 lb (80 g)
<b>Temperature range</b>	Operating: 32 °F to 104 °F (0 °C to 40 °C) Storage: 14 °F to 140 °F (-10 °C to +60 °C)
<b>Humidity range</b>	Operating: 0 % to 45 % RH non-condensing Storage: 0 % to 95 % RH non-condensing
<b>Certifications</b>	

## **LIMITED WARRANTY & LIMITATION OF LIABILITY**

Fluke Networks products will be free from defects in material and workmanship for one year from the date of purchase. Parts, accessories, product repairs and services are warranted for 90 days. This warranty does not cover disposable batteries, cable connector tabs, cable insulation-displacement connectors, or damage from accident, neglect, misuse, alteration, contamination, or abnormal conditions of operation or handling. Resellers are not authorized to extend any other warranty on Fluke Networks' behalf. To obtain service during the warranty period, contact your nearest Fluke Networks authorized service center to obtain return authorization information, then send your defective product to that Service Center with a description of the problem.

THIS WARRANTY IS YOUR ONLY REMEDY. NO OTHER WARRANTIES, SUCH AS FITNESS FOR A PARTICULAR PURPOSE, ARE EXPRESSED OR IMPLIED. FLUKE NETWORKS IS NOT LIABLE FOR ANY SPECIAL, INDIRECT, INCIDENTAL OR CONSEQUENTIAL DAMAGES OR LOSSES, ARISING FROM ANY CAUSE OR THEORY. Since some states or countries do not allow the exclusion or limitation of an implied warranty or of incidental or consequential damages, this limitation of liability may not apply to you.

6/01

Fluke Networks  
PO Box 777  
Everett, WA 98206-0777  
USA